

**rullari**<sup>®</sup>

ferdinand  
brasellmann.de

Vielfalt mit Profil

# **INSULATED INDUSTRIAL- ROLLER SHUTTER DOOR 1.100D**



### 1.100D

Kokema Oy supplies industrial roller shutter doors manufactured by its partner, Ferdinand Braselmann GmbH & Co. KG. Ferdinand Braselmann GmbH & Co. KG is a German manufacturer of industrial roller shutter doors established in 1884. Industrial roller shutter doors are designed for highly demanding applications, where environmental factors require high quality and durability. Industrial doors are also CE certified. The doors are manufactured according to the customer's specifications and the professional installation service all over Finland manages the installation of the doors flexibly.

#### TECHNICAL INFORMATION:

##### THE DOOR CURTAIN

The door curtain of an industrial roller door consists of a 100 mm wide 2-part profile. The profile is filled with polyurethane. The profile material can be aluminum, steel or stainless steel. The maximum roll width is 8000 mm (steel) and 6500 mm (aluminum). The maximum height is 6000 mm. The door curtain can also be ordered with window profiles. The door can be provided so that the inner surface of the profile is made of PVC plastic, the so called cold bridge can be cut off (IsoPlus).

##### GUIDE RAILS, FIXING ANGLES, ROLLER BARREL

Steel (galvanized) guide rails (80 x 80 mm) are on the sides of the roller door. The guide rails are equipped with PVC slider belts. The roller door comes with steel (galvanized) fixing angles for the engine and the roller barrel. The roller barrel is painted steel. At the end of the roller barrel there is a right angle gear motor (3x230V).

##### OPERATION

Industrial rolling doors are always electrically operated. The doors are forced controlled and the door is supplied with a control center with pushbuttons on the cover. The doors can be equipped with impulse control, safety equipment and emergency power for power outages. A wide range of accessories can be included with the doors, such as a clock unit, vehicle radar, heater, wind clips, etc. Ask for more information!

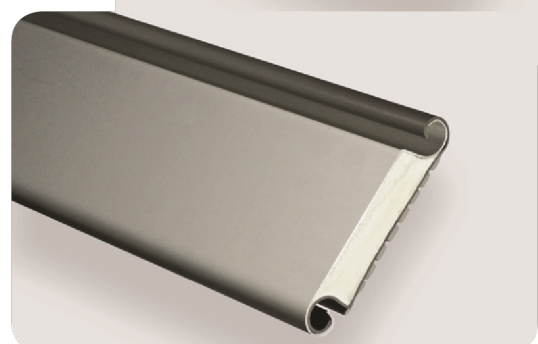
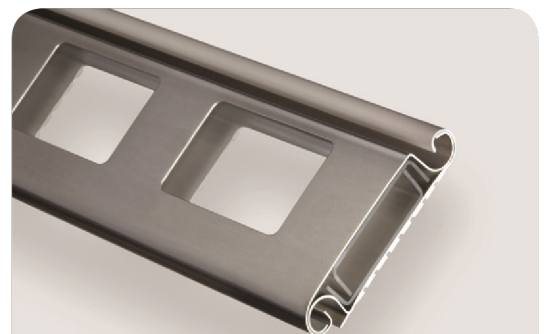
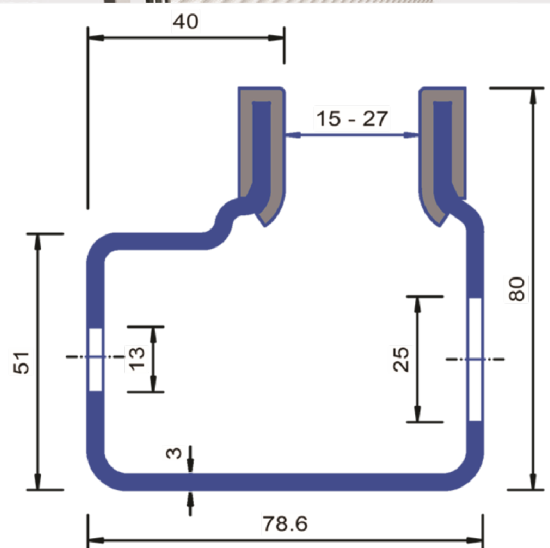
##### LOCKING

Doors are equipped with automatic locking. In addition, the door can include accessories such as padlock studs.

##### SURFACE TREATMENT

Aluminum industrial roller doors are standard without surface treatment. The door can also be powder coated in RAL Classic tones. Steel roller doors are supplied as standard galvanized, but they can also be powder coated in RAL Classic tones.

### STRUCTURE



**KOKEMA<sub>oy</sub>**

PL 91, Kakkulaistentie 5, 32801 Kokemäki  
Tel. +358 10 326 3840  
[info@kokema.fi](mailto:info@kokema.fi) | [www.kokema.fi](http://www.kokema.fi)

