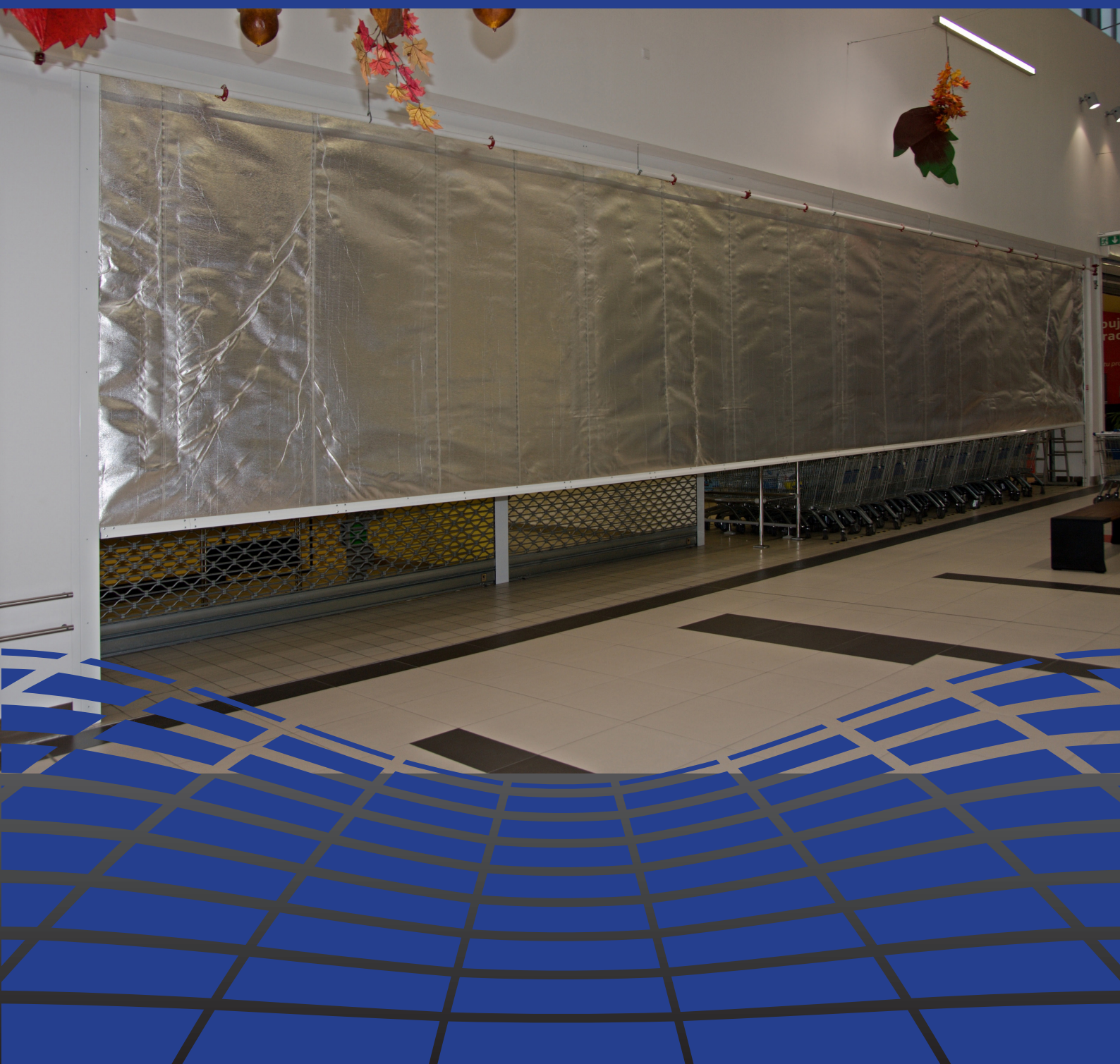


FIBREROLL E & EW



rullari®

STYLISH SECURITY

Bolton Gate Company FIRE RESISTING ROLLING CURTAIN

Bolton Gate Company, the acknowledged leader in the field of rolling fire door technology, now offer an enhanced design of fire curtain providing not only up to three-hour fire integrity between fire compartments but also with an integrated reflective coating which reduces radiated heat to such a large extent that it meets the requirements for a rating of up to EW120.

PERFORMANCE CHARACTERISTICS:

Fire resistance to E30, E60, E120 or E180 classifications. Radiated heat reduction of 15 kW/m² to EW30, EW60, EW90 or EW120 classifications.

ACCREDITATIONS:

Tested to EN1634-1 all in accordance with EN 13501-2, EN15269-11. These active fire curtains are CE marked all in keeping with BS EN 13241:2003+A2:2016 and EN16034.

APPLICATIONS INCLUDE:

Retail Malls; Offices; Receptions / Foyers; Lift Lobbies / Lift Doors; Open-plan private residencies.

STANDARD SPECIFICATION:

Operation

Electric operation is by means of a tubular motor suitable for connection to a 230-volt nominal single-phase supply with gravity failsafe closure in a fire condition.

A control panel is provided complying with EN 14637 incorporating operating buttons on the lid and the facility for connection of a normally closed volt free contact from the Client's fire alarm system with a low-level emergency close / reset button. A battery is included to prevent unwanted closing of the curtain in case of power failure.

The curtain will automatically descend upon receipt of the fire signal.

If the curtain system is to be used on an escape route, only local heat detection can be used. This can be accommodated by our operating controls – see options below.

Curtain

Specially reinforced and coated fibreglass material which is designed to withstand temperatures more than 1000 degrees C.

The curtain thickness is approximately 0.7mm and the weight 780 grams per square metre.

Bottom Rail

Dependent upon rating, either a steel bottom rail is attached to the curtain or a loop of curtain is fitted with an integrated weight bar. Both provide rigidity and act as a weight to assist in closure.

Coil Casing

The roller is covered by a galvanized steel casing which also acts as a fire seal at the head.

Side Guides

Manufactured from galvanised steel and formed into a slimline profile which is prepared for bolting to the opening structure.

Roller

The roller comprises a 101mm diameter steel tube in which the tubular motor is fitted at one end and steel shafts / discs at the other.

Endplates

Galvanised steel endplates are provided with integrated angles to simplify installation.

Finish

The curtain is supplied in a neutral grey colour with the side guides, bottom rail, and coil casing powder coated RAL 9010 (Pure White) or RAL 9006 (White Aluminium).

WEIGHT

Varies with opening size but approximately 45kg/m².

OPTIONS

- Sounder beacon during closing.
- Voice warning during closing.
- Emergency retract via UPS and push button on 1 or 2 sides
- Two stage or delayed descent.
- Obstruction warning using light curtain or photocell with delayed timer and sounder.
- Side guides, bottom rail and coil casing supplied with polyester powder coated finish to alternative RAL colour from standard range.
- Local heat detector.

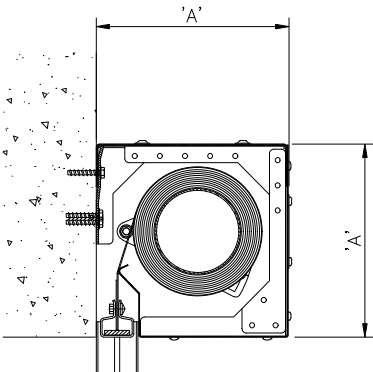
KOKEMA_{oy}

Kakkulaistentie 5, 32800 Kokemäki

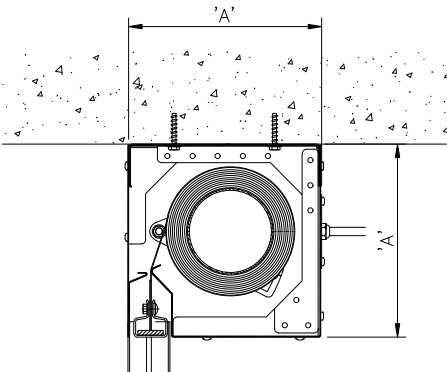
Tel. +358 10 326 3840

info@kokema.fi | www.kokema.fi

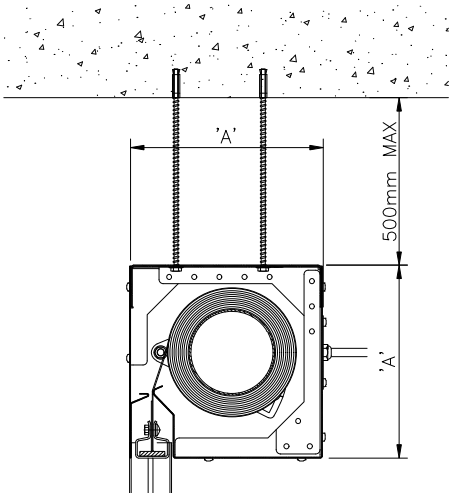
BOX DETAIL



FACE FIXED



SOFFIT FIXED



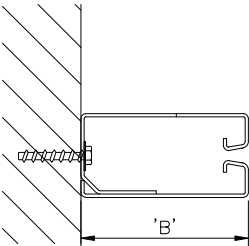
SUSPENDED

'E' Rated Curtains	Max Clear Width	Max Clear Height	Box Size 'A'	Guide Size 'B'
E60	5794mm	3000mm	200mm	100mm
E60	14900mm	6770mm	230mm	120mm*
E90	5000mm	3000mm	200mm	100mm
E90	14900mm	6770mm	230mm	120mm**
E120	5000mm	3650mm	230mm	100mm
E120 (double curtain)	16254mm	3000mm	230mm	120mm*
E120 (double curtain)	16254mm	6740mm	260mm	120mm*
E180 (double curtain)	16254mm	3000mm	230mm	120mm*
E180 (double curtain)	16254mm	6740mm	260mm	120mm*

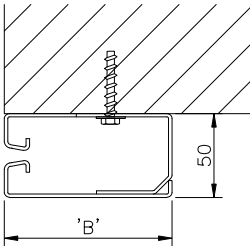
'EW' Rated Curtains	Max Clear Width	Max Clear Height	Box Size 'A'	Guide Size 'B'
EW60	5794mm	3000mm	200mm	100mm
EW60	14900mm	6770mm	230mm	120mm*
EW90	4500mm	3300mm	230mm	100mm
EW120 (double curtain)	16254mm	3000mm	230mm	120mm*
EW120 (double curtain)	16254mm	6740mm	260mm	120mm
EW180 (double curtain)	16254mm	3000mm	230mm	120mm*
EW180 (double curtain)	16254mm	6740mm	260mm	120mm*

*100mm guide if <5794mm clear width
**100mm guide if <5000mm clear width

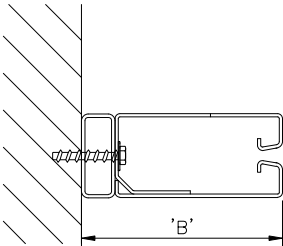
JAMB / GUIDE DETAIL



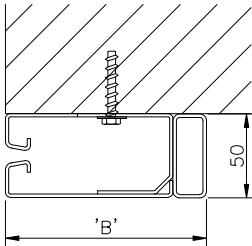
FIXED BETWEEN



FACE FIXED



120mm FIXED
BETWEEN



120mm FACE
FIXED

