

rullari®

bgc
Bolton Gate Company

FIREROLL VR60



rullari®

STYLISH SECURITY

Bolton Gate Company

ONE HOUR INSULATED HEAT AND FIRE RESISTING ROLLING SHUTTER

Bolton Gate Company, the acknowledged leader in the field of rolling fire door technology, introduces Fireroll VR60, a revolutionary product designed to provide 60/60 minutes' fire protection between individual compartments.

Up to the present time, the insulation requirement of a fire door was only met by unsightly hinged or sliding products with thick panels and the disadvantage of their associated space requirements. Due to the highly innovative and distinctly unique design of the Fireroll VR60, the product has all the advantages of a rolling fire shutter which can be stored above the false ceiling whilst at the same time meeting the challenging requirements of both integrity and insulation in line with the latest building regulations.

PERFORMANCE CHARACTERISTICS:

Resistance to Fire - E and EI(1)60 classifications – providing fire and thermal heat protection.

ACCREDITATIONS:

Tested to EN 1634-1 and is classified as EI(1)60 in accordance with EN 13501-2, EN13241 & EN16034. The product is CE marked accordingly.

APPLICATIONS INCLUDE:

Utilised on protected routes in Schools, Universities, Warehousing, Shopping Malls and Factories.

STANDARD SPECIFICATION:

Operation

Under normal circumstances, the door is electrically operated using a 400- volt nominal three phase gear motor mounted at one end. In a fire condition, an auxiliary 24-volt DC motor ensures that the door closes even if the mains supply fails. A control panel is provided which has the facility to receive an incoming fire single. This panel also incorporates the batteries necessary to operate the auxiliary motor.

Open, close, stop push buttons are provided on the face of the control panel for standard operation.

Curtain

The curtain is constructed from 63 x 36mm laths comprising a synthetic material outer skin bonded to a special inner core consisting of highperformance insulation materials. Stainless steel cables connect the laths together and are fastened to the roller at the head.

Bottom Rail

The bottom rail comprises a standard lath fitted with an extruded PVC bottom seal.

Side Guides

Manufactured from galvanised steel and formed into a channel profile which is prepared for bolting to the structure by means of continuous fixing angles.

Roller

The roller comprises a steel tube of adequate diameter and wall thickness to avoid deflection. Steel shafts and discs are inserted at each end and the whole assembly is supported on brackets at each end.

Endplates

Fabricated from galvanised steel of adequate thickness relative to door size and supplied with steel plates for fixing to the structure.

Head

A combination of galvanised steel 'u' profile and MDF board with a special fire protection cover is fixed to the lintel into which the top of the door engages providing an effective seal against the passage of flames and hot gases.

Finish

The curtain is self-finished grey with the perimeter intumescent seal in black.

WEIGHT

Varies with opening size but approximately 50kgs/m².

MAXIMUM SIZES

6000mm wide x 5000mm high (subject to a maximum of 22m²)

OPTIONS

- Polyester powder coated finish to a standard range of RAL colours to side guides only.

KOKEMA_{oy}

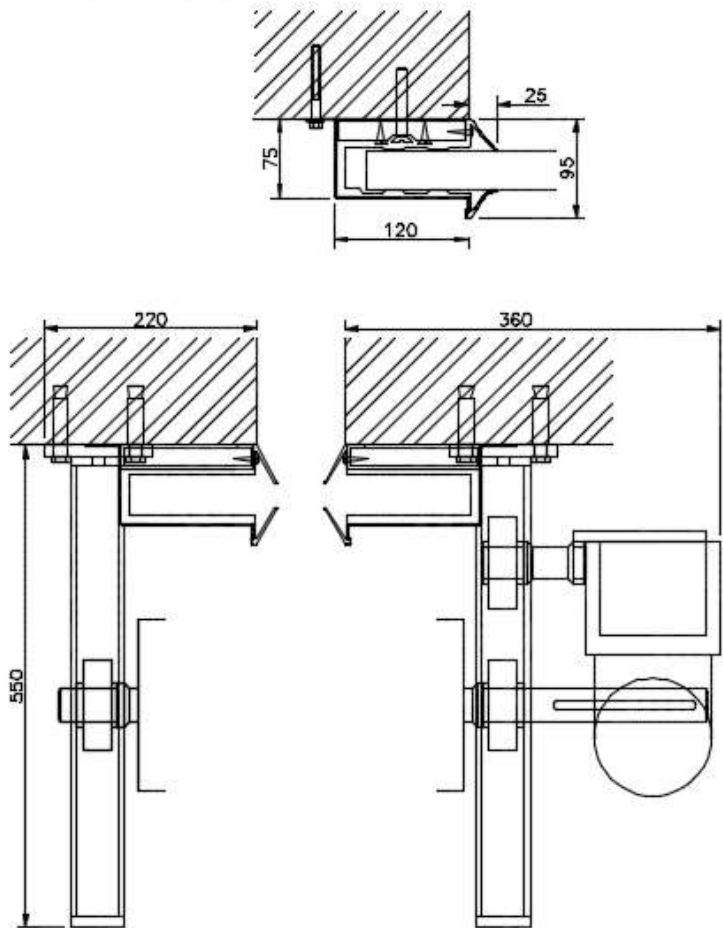
Kakkulaistentie 5, 32800 Kokemäki

Tel. +358 10 326 3840

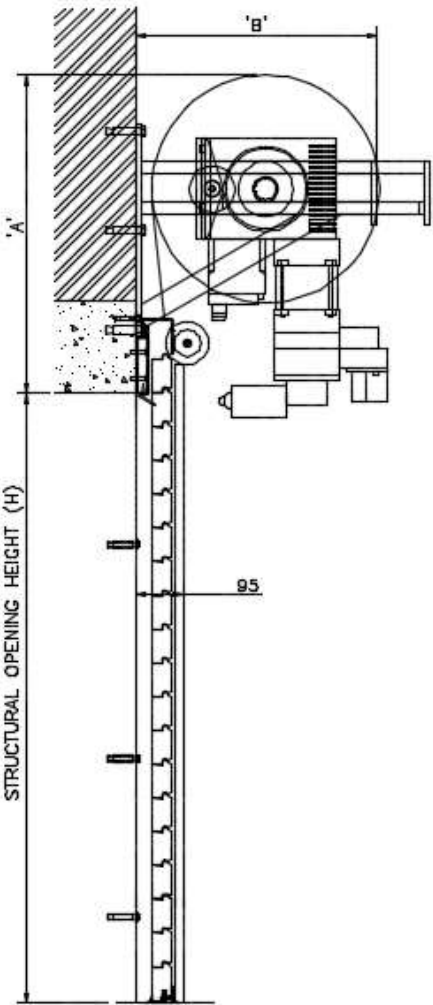
info@kokema.fi | www.kokema.fi

STRUCTURAL OPENING HEIGHT (H)	'A'	'B'
0 TO 2750	620	500
2751 TO 4000	660	600
4001 TO 4999	720	650
> 5000	760	700

ENLARGED JAMB DETAIL



SECTION



ALL DIMENSIONS IN MM

PLAN

